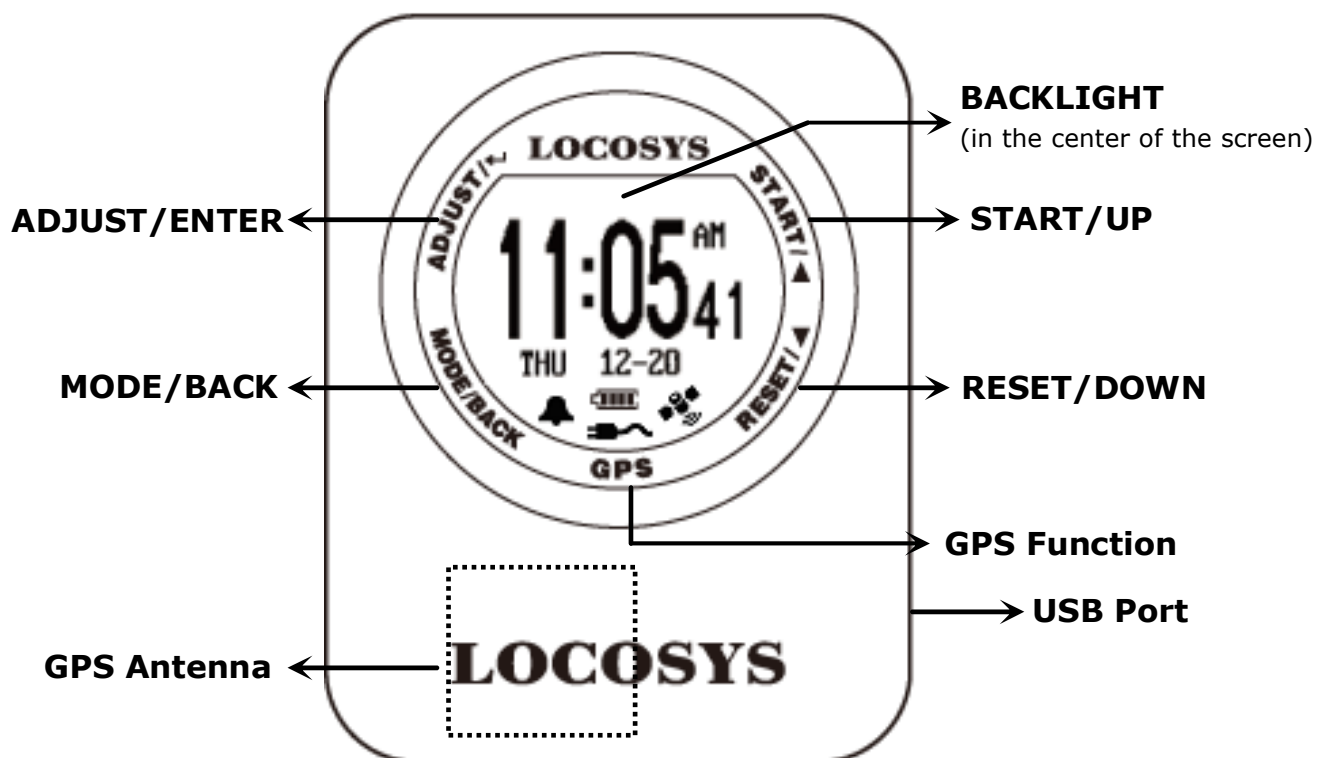


LOCOSYS GW-52

Quick Start Guide



Alarm status



Blinking: searching for GPS

Steady on: GPS is ready



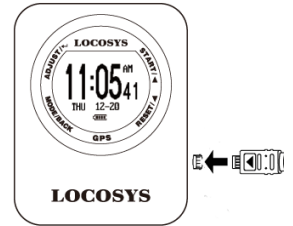
Battery level



Charging

Section 1. Brief Introduction

- 1.1** Use the cable that comes along in the package to power on GW-52 and charge it for at least 2 hours.



- 1.2** Touch **MODE** and select Time modes
(1) Clock; (2) Alarm; (3) Stopwatch; (4) Timer



- 1.3** Touch both **ADJUST** key and **GPS** key simultaneously to enter GW-52 setting screen.



- 1.4** Touch both **START** key and **GPS** key to enter GPS mode screen. Start searching for GPS...
(Auto Lock Enabled: If SPD GENIE value is non-zero)



- 1.5** **START** + **MODE**: Lock/Unlock key.
Center Key: Backlight on last 3 sec.
Battery Outline Flash: Device key lock

Section 2. Time Mode

2.1 Clock Mode

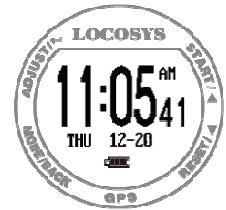
Display local time and be adjusted with GMT setting.

Tip: Quick clock time setup for first time usage.

(1) GMT Setting: Refer to 3.4

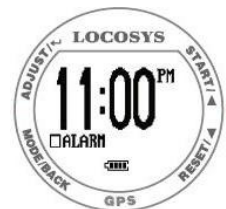
(2) GPS Time Synchronization: Under open sky

environment, switch to "Action Speed" screen and wait until the GPS icon is steady on. It will be synchronized to the precise GPS time automatically.



2.2 Alarm Mode

- Touch **ADJUST** key to adjust alarm time in sequence.
- Touch **UP** or **DOWN** key to select numbers and **START** or **RESET** key to start/close alarm.



2.3 Stopwatch Mode

- Touch **START** key to start counting time and touch again to stop.
- Touch **RESET** key to reset counting time as "00:00₀₀".



2.4 Timer Mode

- Touch **ADJUST** key to adjust timer time in sequence.
- Touch **UP** or **DOWN** key to select numbers and **MODE** key to complete.
- Touch **START** key to start counting down and touch again to pause.
- Touch **RESET** key to reset



Section 3. Setting

3.1 LOGGING: Log rate setting.

Touch **ADJUST** key to select OFF, 1HZ, 5HZ or SMART through **UP** or **DOWN** key. Touch **ADJUST** key again to complete.



3.2 MIN SPEED: Speed threshold, only speed above [MIN SPEED] is logged.

Touch **ADJUST** key to select 0 KMH to 15 KMH through **UP** or **DOWN** key. Touch **ADJUST** key again to complete.



3.3 UNIT: Speed measurement unit.

Touch **ADJUST** key to select KM, MI, NM through **UP** or **DOWN** key. Touch **ADJUST** key again to complete.



3.4 GMT: Set GMT/Time zone, e.g. +8:00 for Taipei.

Touch **ADJUST** key to select Time Zone through **UP** or **DOWN** key. Touch **ADJUST** key again to complete.

(Time display in clock mode)



3.5 SPEED AVG: Time interval for speed averaging.

Touch **ADJUST** key to select 1 sec to 60 sec through **UP** or **DOWN** key. Touch **ADJUST** key again to complete.



3.6 SPD GENIE: The minimum speed threshold to activate [SPD GENIE] function.

Touch **ADJUST** key to select 0 to 31 through **UP** or **DOWN** key. Touch **ADJUST** key again to complete.



3.7 **ACTION SPEED:** Speed display type.

Touch **ADJUST** key to select SPEED⁽¹⁾, NS AVG⁽²⁾ through **UP** or **DOWN** key. Touch **ADJUST** key again to complete.

⁽¹⁾SPEED - Current speed (200ms average)

⁽²⁾NS AVG - N-second average speed based on [SPEED AVG].



3.8 **SPD FONT:** Speed display font for Speed Genie results.

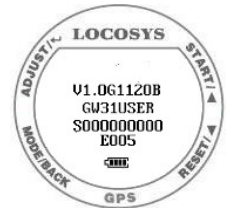
Touch **ADJUST** key to select SMALL, BIG through **UP** or **DOWN** key. Touch **ADJUST** key again to complete.



3.9 **FIRMWARE VERSION**

Touch **ADJUST** key to check device info.

- Firmware Version: V0.9G326A
- User Name: GW31USER
- Serial Number: S000000000
- GPS Version: E005



Section 4. GPS Mode

4.1 Action Speed: Display current instant speed or N-sec. average speed.

- **Vertical Bar:** Log memory usage.
- **Horizontal Bar:** Speed accuracy indicator.
(Long bar means good signal)
- Touch **START** key to next page “Top 10 AVG Speed”.



4.2 Auto Speed Report: If [SPD GENIE] is enabled, the auto speed report screen shows at the end of each session.

e.g. MAX SPEED: 38.26 KH

N-SEC SPEED: 34.41 KH

(Medal icon: New record achieved.)

When in Big Font mode, 3 screens are displayed one after another

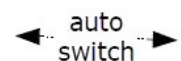
MAX SPEED

N-SEC SPEED

DISTANCE TRAVELLED (in Big Font mode only)



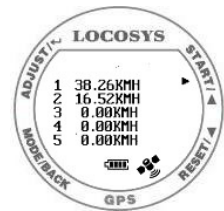
Small Font



Big Font

4.3 Top 10 AVG Speeds: Show Top 10 average speed records.

- Touch **START** key to next page and touch **RESET** key to previous page.
- Touch **MODE** key to scroll page.
- Touch **ADJUST** key to delete records.



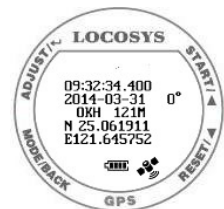
4.4 Top 10 Max Speeds: Show Top 10 max speed record.

- Touch **START** key to next page and touch **RESET** key to previous page.
- Touch **MODE** key to scroll page.
- Touch **ADJUST** key to delete records.



4.5 PVT: Show position, velocity, and time

- Touch **START** key to next page and back to Action Speed screen.
- Touch **RESET** key to previous page.



Section 5. GW-52 PC Utility

5.1 Connect device procedure : (Make sure USB driver is installed)

(1) Select COM port properly.

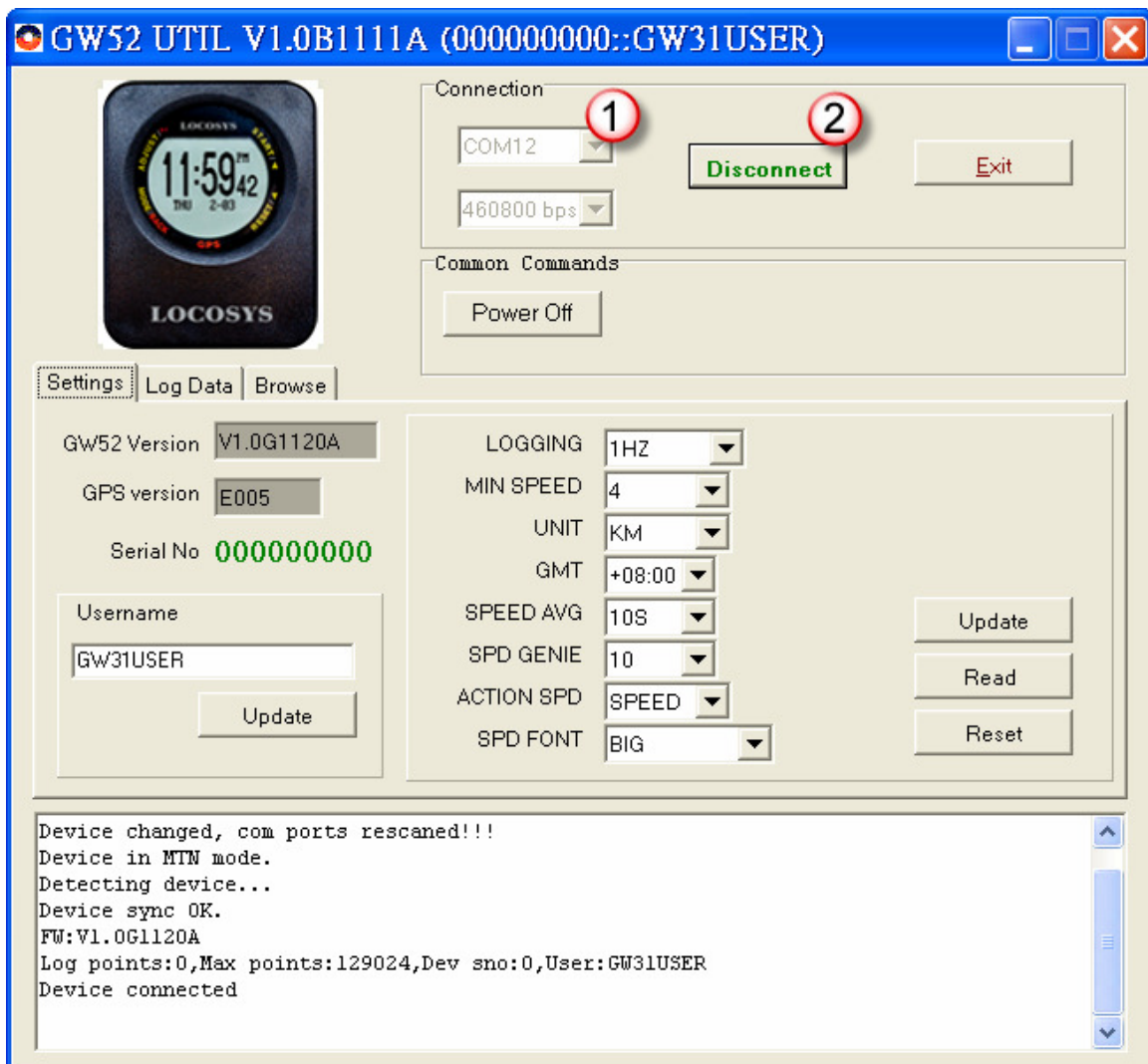
(2) Click “Connect” to connect device.

Once the device is connected, the firmware version will be displayed.

(“V1.0G1120A” in this example)

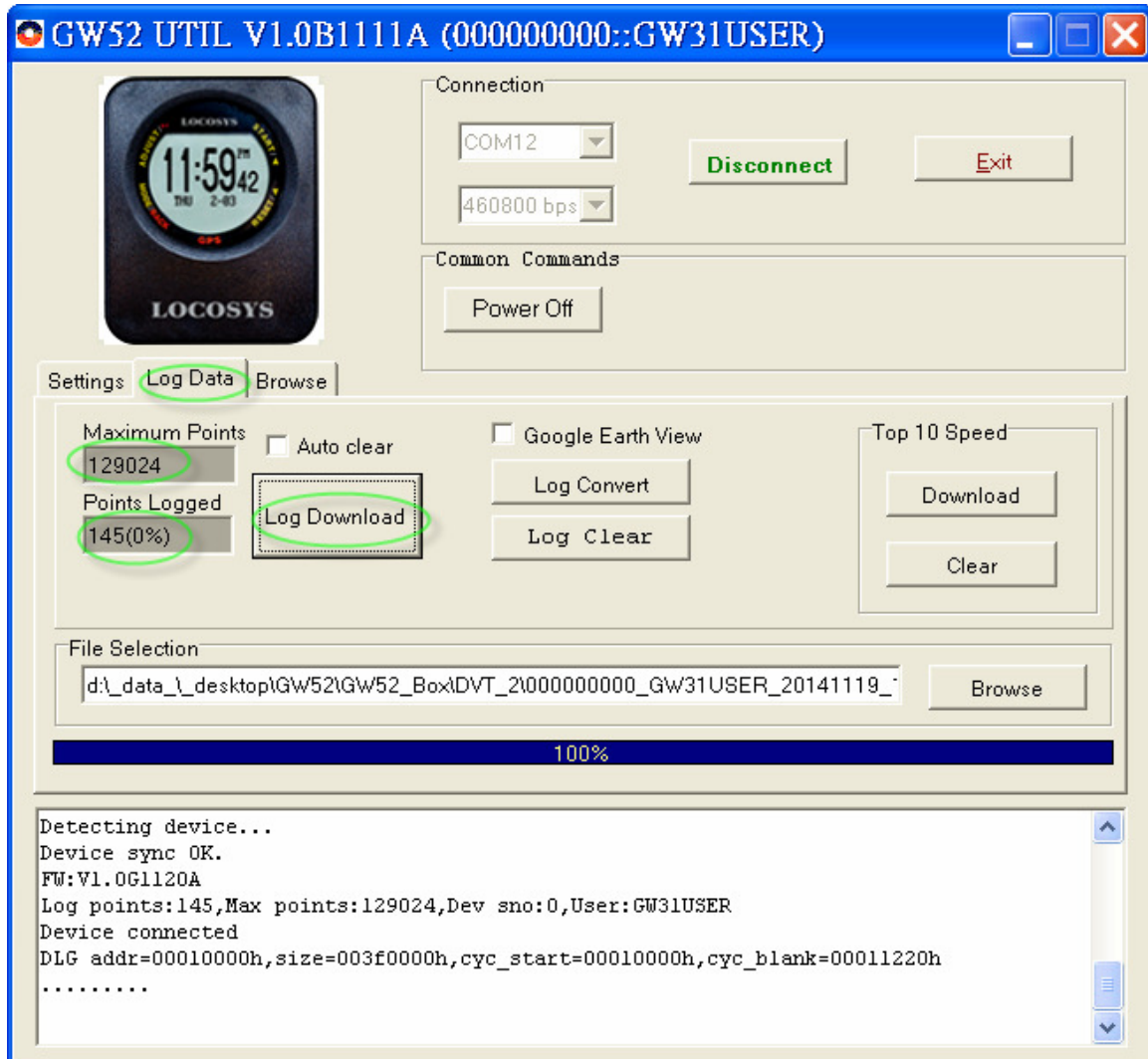
5.2 Click “Settings” to select setting function page.

In setting function page, users can change username, utc offset, log interval….



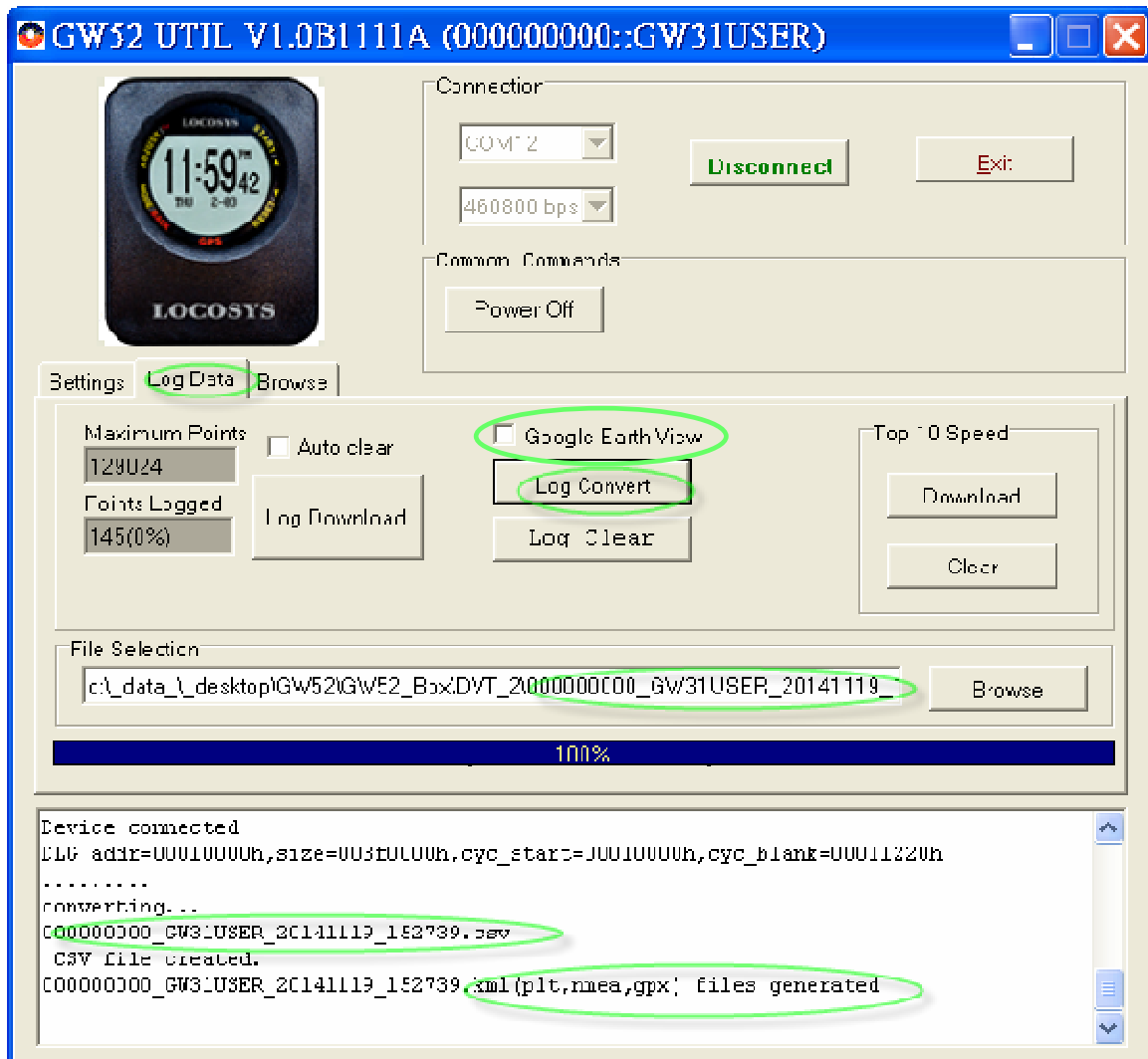
5.3 Click “Log Data” to select log function page.

In this page, users can download log data (in SBP format).



5.4 Click "Log Convert" to convert the SBP file into cvs, NMEA, GPX and KML files.

(If users want to see the travel trajectory, please check [✓] Google Earth View.)



5.5 Click “Browse” to view the SBP file.

The screenshot shows the GW52 UTIL V1.0B1111A (000000000::GW31USER) application window. It features a LOCOSYS device image on the left, connection settings (COM12, 460800 bps) and buttons (Disconnect, Exit) on the right. Below are tabs for Settings, Log Data, and Browse. A table displays SBP-W2 data with columns for HDOP, SVID#, Msec, UTC, SVID, Lat, Lon, Alt, and SO. The Log window at the bottom shows the following text:

```
Device connected
DLG addr=00010000h,size=003f0000h,cyc_start=00010000h,cyc_blank=00011220h
.....
converting...
000000000_GW31USER_20141119_152739.csv
  CSV file created.
000000000_GW31USER_20141119_152739.kml(plt,nmea,gpx) files generated
```

5.6

Click the SBP record in the browse page to view the point on Google Map.

Or, to view the converted GPX and KML files on Google Earth.

